



CHIBA



School Exchange / Homestay / Rich Cultural Experience


# Educational Travel in Chiba, Japan



# Access Guide



Narita Airport — Tokyo		1 hour
Narita Airport — Choshi		1 hour
Narita Airport — Tateyama		2 hours
Narita Airport — Yokohama		1 hour 30 min.
Narita Airport — Nagano		4 hours

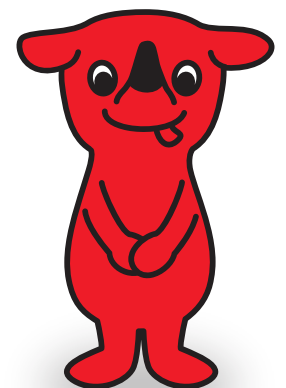
 Highway



# Index

---

- 03** Overview of Chiba Prefecture
- 05** Educational Tours in Chiba Prefecture
- 07** Schools in Chiba Prefecture
- 08** Voices from Teacher and Student
- 09** A typical school calendar in Chiba Prefecture and possible timing for visits
- 10** School Exchange and Homestay Guidelines
- 11** School Exchange Programs
- 15** Homestay
- 19** Company / Facility Tours
- 23** Visiting University Campus
- 24** Trip Itineraries for School Exchange Programs
- 28** Chiba's Flowers and Fruits Calendar
- 29** The Food Culture in Chiba
- 30** Muslim-friendly Locations in Chiba



# Overview of Chiba Prefecture

Chiba Prefecture is facing the Pacific Ocean on the east side and Tokyo Bay on the west side.

It is part of the capital area of Japan, located next to Tokyo, and has Tokyo Disney Resort, which is called a land of dreams. It also has Narita International Airport, which serves as the air gateway to Japan, connecting Japan to the world.

The prefecture is home to facilities related to science technology and cutting-edge industry, outlet malls, and entertainment facilities. There are also facilities where you can learn history and culture and enjoy abundant nature. A variety of educational tours are available and include activities in nature and stays at farmer's houses.



Narita International Airport in the prefecture serves Japan's largest number of people who use international flights. As it also has many flights from all over the world, it is very convenient.

There are nice main roads and moving by bus, which is a common and essential transportation means for educational tours and other group trips, is comfortable.

Since Chiba is adjacent to Tokyo, the educational tour plan can easily include sightseeing around Tokyo.

This is an advantageous point of Chiba.



Chiba has many schools active in international exchanges and this is one reason why educational tours to Chiba are popular.

Students can interact with different country's students and cultures through tea ceremony, calligraphy, karate, kendo, cooking and other activities in school exchange programs.

# Educational Tours in Chiba Prefecture

## Many Hands-on Learning Facilities

Chiba Prefecture has many interesting "hands-on" facilities that are the most important and best part of educational tours: hand-rolled sushi making, tea ceremony experiencing, paper fan making, bamboo shoot digging in mountains, enjoying with animals on huge farms, etc. There are also many other facilities and places for hands-on learning.



## Enjoying Wonderful Experiences with Host Families

Many families actively participate in the homestay program and welcome students from abroad; their kind hearts are important assets of the program. Our team of coordinators will assist you in finding schools that suit your students' majors and travel plans, enabling them to engage in international exchange activities. Since there are many minshuku guesthouses, especially in the rural areas of the Prefecture, it will be a perfect experience for students to spend time in nature and create unforgettable memories by interacting with kind Japanese host families.



## Various Educational Travel Programs in Chiba Prefecture

Chiba Prefecture has many facilities which are suitable for various educational travel programs. At those facilities, where you can learn about the history and culture of Japan, you can develop a spirit of openness to different cultures. There are also many nature-related facilities, science technology facilities, and cutting-edge corporate facilities, making Chiba Prefecture a perfect place for educational travel of students in a wide age range.



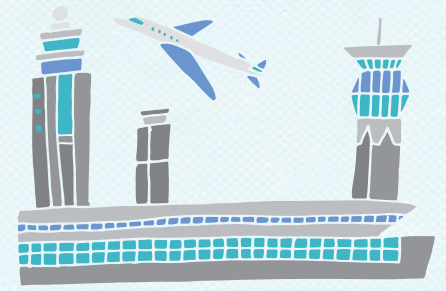
Plant Factory Test Research Facilities  
(NPO Japan Plant Factory Association, JPFA)



Yamasa Soy Sauce Factory

## Rich Natural Environment

With Narita International Airport, a gateway to the world, and close to megacity Tokyo, you might think Chiba Prefecture is a big urban area. But Chiba also has rich nature. When you plan educational tours to visit Chiba, making an itinerary that includes experiencing rich nature is recommended.



## A Number of Tourist Spots

Touring sightseeing places is one of the enjoyable aspects of educational tours. Tokyo Disney Resort, Kamogawa Seaworld, and Mother Farm are popular sightseeing facilities that attract a lot of fans from all over the country.

Chiba has also vast outlet malls and you can enjoy shopping.



### Kominato Railway

<https://www.kominato.co.jp/>



### Katori Shrine

<https://katori-jingu.or.jp/>



### Kamogawa Sea World

<https://www.kamogawa-seaworld.jp/english/>



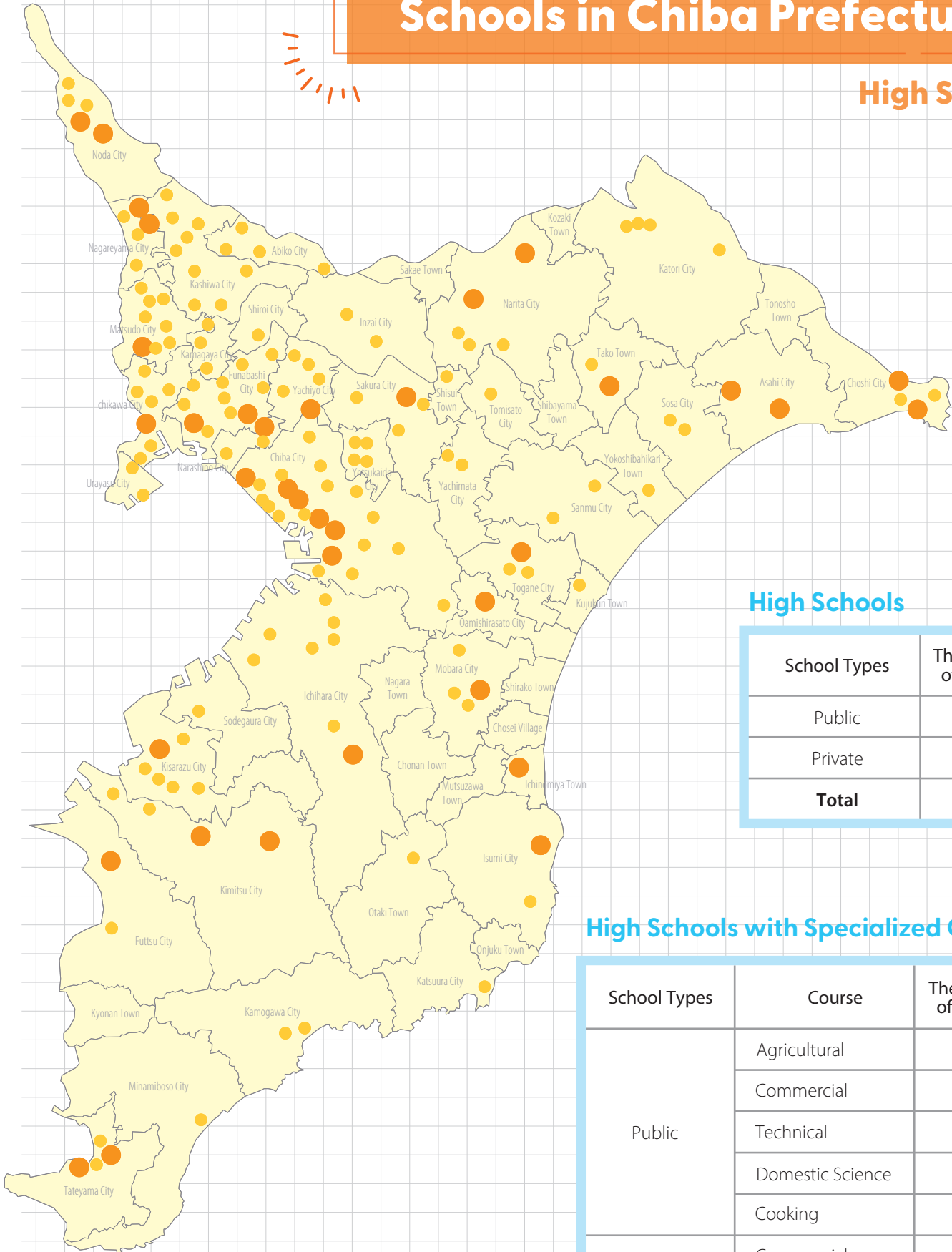
### Mother Farm

<https://www.motherfarm.co.jp.e.apt.hp.transer.com/>



# Schools in Chiba Prefecture

## High Schools



- : High schools with specialized courses
- : High schools with comprehensive courses

## High Schools

School Types	The number of Schools
Public	128
Private	54
<b>Total</b>	<b>182</b>

## High Schools with Specialized Courses

School Types	Course	The number of Schools
Public	Agricultural	11
	Commercial	11
	Technical	8
	Domestic Science	5
	Cooking	1
Private	Commercial	4
	Domestic Science	2
	Art	2
	Cooking	1





## Teacher's Voice

SMK SERI HARTAMAS Principal

The first time I came to Japan I was impressed with its culture of cleanliness and environmental preservation, and also that this is a culture of respect for the people around you. The schools I saw were also very clean and everywhere you got a sense of how important nature is for the Japanese people; the way they deal with recycling is a good example of that.

These exchange programs bring students together and allow them to communicate on a more intimate level; that way they learn about each other's country and culture. Furthermore, from their host families, they get to experience Japan's family values and perhaps also develop a personal sense of these people's sense or punctuality, care for the environment, and so forth. It is my hope that students will bring these positive aspects of Japan back to their home country.

I want to thank this program's sponsor, Chiba Prefecture and particularly the town of Tako. The students can learn about Japan from newspapers and magazines but by taking part in such a program they get a chance to actually feel Japan's culture. It's a wonderful program and I hope more students will have the opportunity to participate in the future.



## Student's Voice

SMK SERI HARTAMAS Student

I was impressed with the cleanliness of Japanese cities and streets. Also, the food was delicious!

Japanese students showed me how to juggle using the kendama and how to make origami; these are actually harder than they seem but the students made every effort to teach me how to do them. Their genial manners, gestures and jokes made the language barrier disappear.

Everyone in Japan was very warm but also very polite; I realized how important it is for them to maintain a sense of distance.

My interest in Japan grew with this visit and I'm considering going to college or seeking employment there in the future.



## Elementary Schools and Junior High Schools

### Elementary Schools

School Types	The number of Schools
Public	746
Private	10
<b>Total</b>	<b>756</b>

### Junior High Schools

School Types	The number of Schools
Public	363
Private	25
<b>Total</b>	<b>388</b>

## Chiba

Total 1326

Public Schools  
1237

Private Schools  
89

# A typical school calendar in Chiba Prefecture and possible timing for visits

Schools in Japan have either a semester system or a trimester system.

## Junior high schools and high schools

\*Please feel free to contact us regarding elementary school visits.

! The new semester is starting! /

		Semester System	Trimester System
		*15% of all the schools in Chiba	*85% of all the schools in Chiba
	4 Apr	Spring holiday, until around Apr. 5 First semester Entrance ceremony	Spring holiday, until around Apr. 5 First semester Entrance ceremony
	5 May	Midterm exam (late May) * A few of the schools with a semester system have their exam in May.	Midterm exam (mid- or late May) * Many of the schools may not be ready for accepting students in May.
	6 Jun	School festival Sports day Midterm exam (early or mid-June)	School festival Sports day
	7 Jul	Summer holiday, starting around Jul. 21	Final exam (early July) Summer holiday, starting around Jul. 21
	8 Aug	Summer holiday, until around Aug. 28	Summer holiday, until around Aug. 31
	9 Sep	Final exam (early September) The end of the first semester Autumn holiday	Second semester School festival
	10 Oct	Autumn holiday, until around Oct. 6 Second semester School festival Sports day	School festival Sports day Midterm exam (mid- to later October)
	11 Nov	School trip (second graders) Midterm exam (mid-November)	School trip (second graders)
	12 Dec	Winter holiday, starting around Dec. 24	Final exam (early December) Winter holiday, starting around Dec. 24
	1 Jan	Winter holiday, until around Jan. 6	Winter holiday, until around Jan. 6 Third semester
	2 Feb	Entrance exams Final exam (mid-February)	Entrance exams
	3 Mar	Graduation ceremony (early March) Spring holiday, starting around Mar. 25	Graduation ceremony (early March) Final exam (early March) Spring holiday, starting around Mar. 25

Visitation Period

Visitation Period

Visitation Period

# School Exchange and Homestay Guidelines

## Notes

**01**

### Application for School Exchange and Host Family

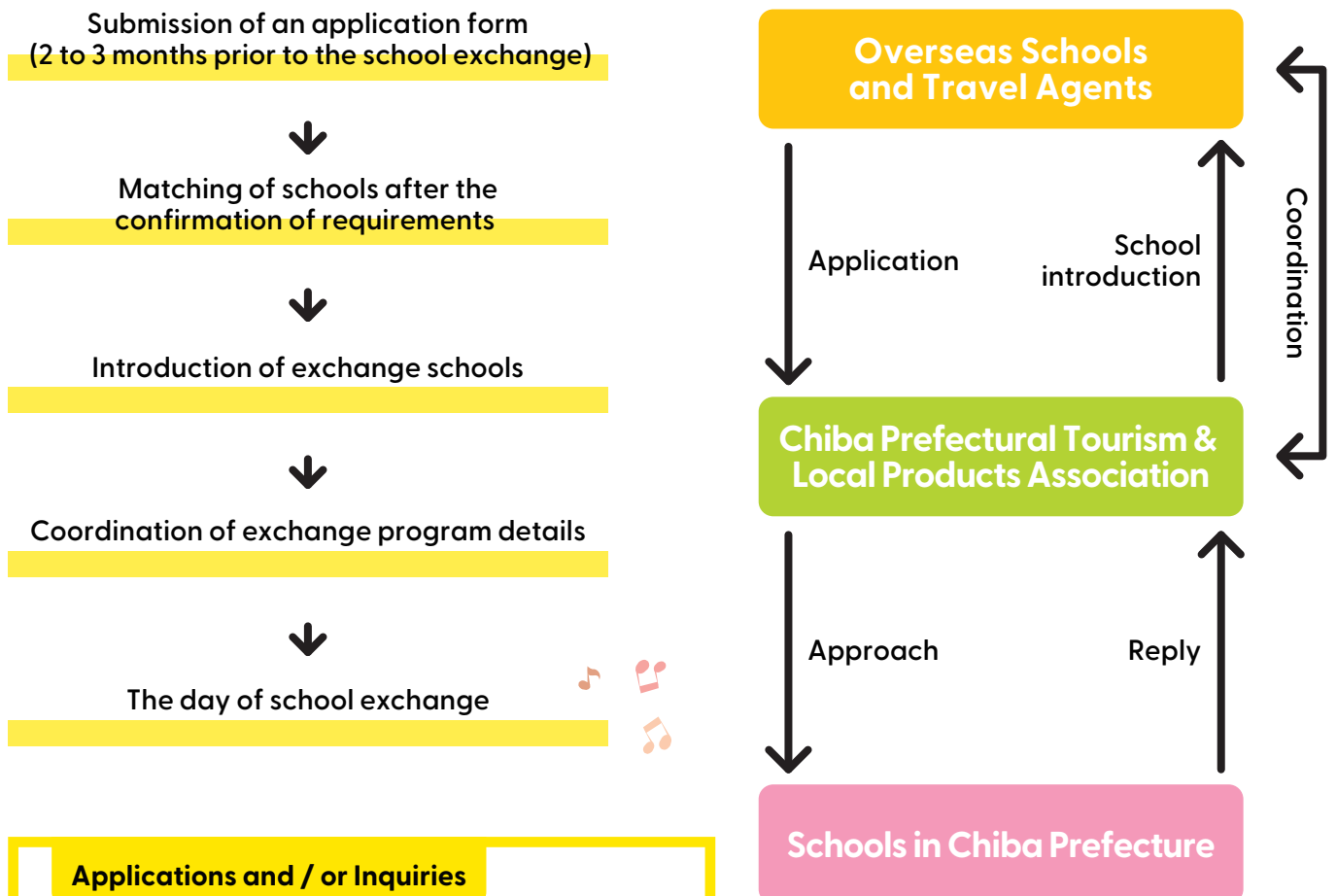
The application deadline is 2 to 3 months prior to your visit.

**02**

### The Period for Your School Exchange and Homestay

Please make sure to set the period for your school exchange and homestay from late April to the end of June, mid-September to the end of November, or mid to late January.

## Flow from Application to School Exchange



### Applications and / or Inquiries

Chiba Prefectural Tourism & Local Products Association  
 kyouryo-ib@chiba-tpa.or.jp

# School Exchange Programs



Tea Ceremony



Kendo



Music



Calligraphy



Sports



Cooking



# Examples of School Exchange Programs 01



13:30

### Welcoming Ceremony



*Dance Performance*



15:30

### Exchange Activities



Japanese culture



Kendo



Tea ceremony



Origami



17:00

### Farewell Party



*See you again!*





# Examples of School Exchange Programs 02

## Culinary Arts Department

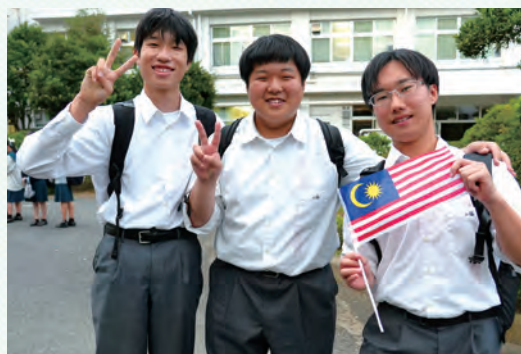


*Nice to meet you!*



9:30

**Arriving at School**



*/ Good morning!*



9:50

**Joint Cooking Practice**



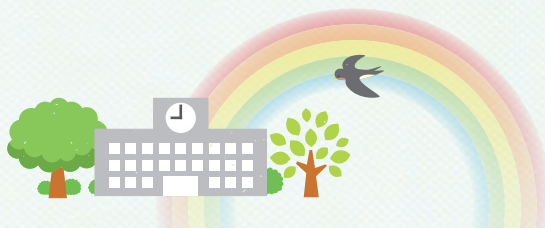
12:00

**Party with Lunch**



*Delicious!*





13:25

### Welcome and Interacting Party



📷 Smile for the camera! ✨



15:00

### Farewell Party

Bye-Bye 🙋



# Homestay

# Welcome



## Fine Private Residences to Stay at

Chiba Prefecture has many private residences where you can stay in rural areas.

Students will experience daily life in an agricultural community in Japan. They experience farming by staying at a farmhouse, learn history and culture by visiting shrines and temples, join local festivals, and enjoy insect collecting and firefly observing in nature.

They can experience daily life of Japanese people with their friends that they cannot experience in ordinary tours, and these experiences will be precious memories for them.

Here are some examples of Homestay experiences in Chiba Prefecture.





## Matsuri-zushi Making Experience

Matsuri-zushi is a typical local food in Chiba. You cook with techniques by which pictures and characters will appear on cut end sides of the rolled sushi. It is difficult at first but don't worry! Your host mother will kindly teach.

Staying at a folk house and making sushi, one of the traditional cultural items of Japan, while enjoying daily life of Japan will be a good memory for students.



## You can Try Yukata Dressing and Bamboo Shoot Digging

Some Minpaku facilities offer a program in which students can do bamboo shoot digging and wearing traditional yukata, a cotton kimono.

Students can enjoy Japanese tradition and nature and also interact with host family members. This is available because Chiba has many families who are supportive of Minpaku. Students can enjoy a valuable educational tour full of Chiba charms.

Minpaku = Private residences which offer homestays

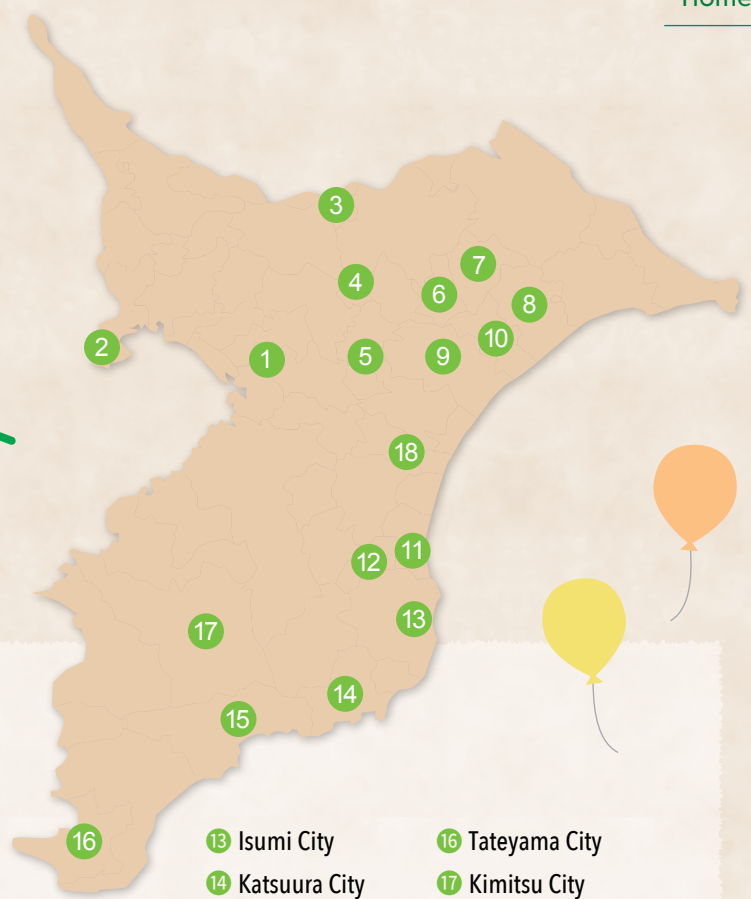


## Agricultural Experience in Rural Areas in Chiba

Adjacent to Tokyo, some cities in Chiba have developed but other areas are blessed with rich nature, and some farmhouses for Minpaku provide agricultural experiences. Daily living experiences at the farmhouses such as those involved in cultivating rice, vegetables and fruits are sure to make the educational tour beneficial and memorable.



# Major Districts with Minpaku Facilities



- |                  |                          |                  |                        |
|------------------|--------------------------|------------------|------------------------|
| 1 Chiba City     | 7 Tako Town              | 13 Isumi City    | 16 Tateyama City       |
| 2 Urayasu City   | 8 Sosa City              | 14 Katsuura City | 17 Kimitsu City        |
| 3 Sakura City    | 9 Sammu City             | 15 Kamogawa City | 18 Oami-shirasato City |
| 4 Shisui Town    | 10 Yokoshiba-hikari Town |                  |                        |
| 5 Yachimata City | 11 Ichinomiya Town       |                  |                        |
| 6 Shibayama Town | 12 Mutsuzawa Town        |                  |                        |



Sakae Town



Tako Town



Sosa City



Sammu City



Katsuura City



Kamogawa City

# Company / Facility Tours

## Agriculture / Traditional Crafts

### Agriculture 01



Applicable field(s): agriculture

植物工場実証研究施設 (NPO植物工場研究会)

#### Plant Factory Test Research Facilities (NPO Japan Plant Factory Association, JPFA)

In the Chiba University Kashiwanoha Campus (specifically in the Center for Environment, Health, and Field Sciences), there are plant factories and other factories with solar/artificial lighting for controlled-environment agriculture (where factors such as light, temperature, humidity, and CO2 are regulated). The facilities operated by different companies use various technologies and methods to explore and demonstrate agriculture friendly to people and the environment. The JPFA offers a tour of these facilities through industry-academia-government collaboration, with the aim of research and promotion of plant factories (reservation required).  
<https://npoplantfactory.org/en/>

Reservation

✉ yoyaku@npoplantfactory.org (English, Japanese)  
🌐 <https://select-type.com/s/JPFA-Tour> (Japanese)

### Agriculture 02



Applicable field(s): agriculture

農業公園ほんぼこ村

#### Country Farm Ponpoko Village

At this farm, about 70 kinds of agricultural products are grown throughout the year, including vegetables, fruit, and herbs, based on organic farming techniques with no agrichemicals. Various seasonal activities are offered, including picking & biting into fresh corn, blueberry picking, various tomatoes tasting, and digging up potatoes and sweet potatoes.  
<http://ponpokomura.jp/>

Reservation

✉ info@ponpokomura.com (Japanese)

### Agriculture 03



Applicable field(s): agriculture

富田さとにわ耕園

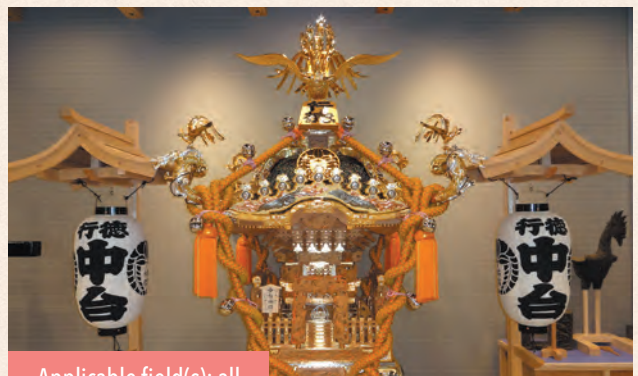
#### Tomita Satoniwa Koen

Surrounded by fields and farms, this center offers great views with moss phlox in spring (April) and cosmoses in autumn (October). Working together with neighboring farms, it offers various activities, including harvesting experience and providing an opportunity to enjoy flowers and the blessings of nature.  
<http://www.tomita-kan.jp/>

Reservation

✉ center-renraku@tomita-kan.jp (Japanese)

### Traditional Crafts 04



Applicable field(s): all

中台製作所

#### Nakadai Seisakusho

The main feature of Japanese festivals is mikoshi portable shrines. Starting its business more than 150 years ago, Nakadai Seisakusho has continued to produce mikoshi with the original method from the Edo period, keeping up the traditional skills. There is a tour to observe the mikoshi production and repair processes, and learning the structure of mikoshi as well as Japan's traditional craftsmanship.  
<http://www.mikoshiya.com/en/>

Reservation

☎ +81-47-357-2061 (Japanese)

# Company / Facility Tours

## Food Industry

### Food Industry 05



Applicable field(s): all

ヤマサ醤油工場

#### Yamasa Soy Sauce Factory

Soy sauce is a traditional seasoning that is essential in Japanese cuisine. Soy sauce production is one of the major industries in Chiba Prefecture. Yamasa has a history of more than 350 years of soy sauce production. A factory tour is offered, in which you can take time to observe and learn how the ingredients, soy beans, salt and wheat, are turned into soy sauce.

<https://www.yamasa.com/english/enjoy/factory-visit/>

Reservation

+81-479-22-9809 (Japanese)  
<https://www.yamasa.com/enjoy/factory-visit/>

### Food Industry 06



Applicable field(s): cooking, commerce

日本食研 千葉工場

#### NIHON SHOKKEN, Chiba Plant

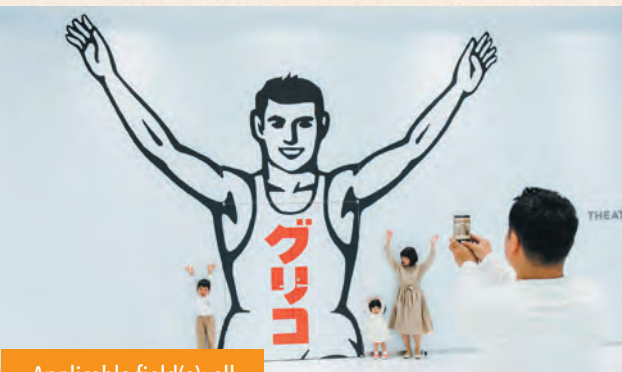
Producing various kinds of seasonings that support Japanese food culture, NIHON SHOKKEN ships the largest amount of liquid seasonings in Japan. The Chiba Plant produces about 3,000 kinds of products, which are not only distributed in Japan but also exported to other countries all over the world. The company's strength is its integrated manufacturing and sales system in which planning, research and development, manufacturing, sales, and logistics are all performed in-house. You can join a plant tour to observe the production lines which create delicious food items with high-quality standards.

<https://www.nihonshokken.co.jp/factory-tour.html>

Contact

Chiba Prefectural Tourism & Local Products Association  
+81-43-225-9170 (English, Chinese, Japanese)  
kyouryo-ib@chiba-tpa.or.jp (English, Chinese, Japanese)

### Food Industry 07



Applicable field(s): all

グリコピア CHIBA

#### Glicopia CHIBA

Enjoy a factory tour at one of the facilities of Glico, which is famous as the producer of the snack food Pocky. You can observe the hygiene protocols, ice cream production lines, and huge freezers, and sample ice cream at the end of the tour. Take a photo of yourself with the large Glico mark in the background!

<https://www.glico.com/jp/enjoy/experience/glicopia/chiba/>

Reservation

+81-4-7127-3355 (Japanese)  
glicopia-chiba@glico.com (English)

### Soy sauce production in Chiba

Chiba prefecture is Japan's biggest producer of soy sauce, which is essential for Japanese cuisine. Along with 3 of Japan's major soy sauce manufacturers, many small soy sauce breweries are located in this area.

Soy sauce production has been active in Chiba for more than 200 years. The main reason for the industry prospering in this area is its location. The abundant water resource from the Tone River, soy beans and wheat grown with the water, and salt farms provide everything needed for soy sauce production. In addition, people utilized the well-established water transportation system to Edo (former Tokyo) to carry a large amount of soy sauce to the big city, making the area a thriving producer of soy sauce.

The brewing technology and distribution network which have been developed and cultivated for years in this area are still active, continuing to support Japanese people's stomachs and Japanese cuisine through soy sauce.



# Company / Facility Tours

## Japanese Culture / Science

### Japanese Culture 08



Applicable field(s): all

神蔵寺

#### Jinzōji Temple

You can enjoy kimono wearing and tea ceremony at this temple. Learn the manners of tea ceremony and how to make and serve tea in your kimono, fully experiencing Japanese culture.

<https://kamogawa-jinzoji.amebaownd.com/>

Reservation

Kamogawa Tourism Platform Co., Ltd.

☎ +81-4-7093-2461 (Japanese)

✉ [travel@kamotabi.co.jp](mailto:travel@kamotabi.co.jp) (English, Japanese)

### Japanese Culture 09



Applicable field(s): all

見浜園

#### Mihama-en Japanese Garden

Located at Makuhari New City in Chiba City, near Tokyo, "Mihama-en" is a Japanese garden where you can enjoy the variegated landscape, which encompasses depictions of mountains, rivers, ocean, and forests, while walking around. In the garden, there is an authentic tea house, "Shorai-tei," where you can have a set of matcha and seasonal wagashi (fee applied), thereby coming in contact with Japan's traditional culture of tea ceremony. With an appointment made more than one month in advance, you can get a casual tea ceremony experience where you can make tea yourself.

<https://www.seibu-la.co.jp/makuhari/>

Reservation

☎ +81-43-296-0126 (Japanese)

✉ [info-makuhari@seibu-la.co.jp](mailto:info-makuhari@seibu-la.co.jp) (Japanese)

### Japanese Culture 10



Applicable field(s): all

コスプレの館

#### Cosplay No Yakata

This facility is a place for cosplay experience with various Japanese costumes, such as ninja and samurai wear. As this facility is right next to "Boso no Mura," an open-air hands-on museum with a recreation of an old streetscape of Japan and as you can go into the museum in Japanese cosplay, you can enjoy feeling as if you went back in time to old-days Japan.

<https://www.town.sakae.chiba.jp/page/page003729.html>

Reservation

☎ +81-476-85-8155 (Japanese)

✉ [doramu-no-sato@town.sakae.chiba.jp](mailto:doramu-no-sato@town.sakae.chiba.jp) (English, Japanese)

### Science 11



Applicable field(s): all

千葉県立現代産業科学館

#### Chiba Museum of Science and Industry

This science museum is composed of three areas, comprising "History of Industry," "Welcome to High Tech," and "Experimental Plaza," under the theme of science and technology that have been applied to industries. It contains participatory exhibitions, in which you can see the mechanisms and mysteries of scientific phenomenon, and corners, in which you can see demonstrative experiments, designed to increase people's interest in science.

<http://www2.chiba-muse.or.jp/www/SCIENCE/>

Reservation

☎ +81-47-379-2005 (Japanese)

# Company / Facility Tours

## Minamiboso City Tourism Association

Located in the southern part of Chiba Prefecture, Minamiboso City is blessed with a nice climate, with a cool summer and a warm winter. Facing the Pacific Ocean at the east end and Tokyo Bay at the west end, the coastal area with large catches of fish and seafood is a perfect place to enjoy delicious fresh fish and seafood. The inland area mostly consists of satoyama, border zones between mountain foothills and villages, where traditional culture coexisting with nature, has deep roots. Minamiboso City with such features is a place where you can enjoy various activities based on abundant nature.

### Minamiboso City Tourism Association 12



Applicable field(s): all

地引網体験

#### Sweep-net Fishing Experience

Surrounded by the ocean, Minamiboso offers an opportunity to experience sweep-net fishing, a traditional fishing method in Boso, where you set a large net in the ocean and pull in the fish caught in the net. You can also learn the history and mechanism of sweep-net fishing and get some knowledge about fish, and all work together to pull the net by hand. It will be a valuable experience to see a variety of fish up close.



Applicable field(s): all

房州うちわ

#### Boshu Uchiwa Fans

Uchiwa hand fans have been re-evaluated as a traditional item to cool oneself in an eco-friendly way. In Minamiboso City, you can make a Boshu uchiwa, one of the "three major uchiwa" fans of Japan. Boshu uchiwa, which is characterized by a round handle made from a round bamboo stick, is one of the representative traditional crafts of Chiba Prefecture. You can glue pieces of paper with your favorite design chosen from various designs onto a frame to make your own fan.



Applicable field(s): all

竹灯籠づくり

#### Taketoro Bamboo Lantern Making

Minamiboso City in Chiba Prefecture is also famous for producing high-quality bamboo. You can make your own original bamboo lantern, called taketoro, by drilling several holes of various sizes into a piece of bamboo. Put a LED light inside the lantern and it will create a magical-looking space and make a great souvenir. Through this craft activity, you can also contribute to the activity of maintaining abandoned bamboo groves.



Applicable field(s): all

マイ箸作り

#### Making Your Own Chopsticks

Chopsticks are must-items for Japanese cuisine. In this activity, you can make your own original chopsticks from bamboo from Boso and/or cedar trees from Yakushima, a world natural heritage site. All you do is to trim the material with sandpaper, so no complicated work is involved.

Contact

Minamiboso City Tourism Association

☎ +81-4-7028-5307 (English, Japanese)

✉ info@cm-boso.com (English, Japanese)

🌐 <https://manabitabi.enjoyboso.jp/>

# Visiting University Campus

## University 13



城西国際大学

### Josai International University

Josai International University has a campus in Togane City, Chiba Prefecture, and Chiyoda City, Tokyo. Since it is an international university and is located close to Narita Airport, it accepts many international students from various countries. The school also encourages and promotes international students to interact with Japanese students and experience Japanese culture. It has a reliable support system for international students, including the International Student Center to support international students and special academic programs for international students to learn Japanese.

<https://www.jiu.ac.jp/eng/>

Reservation

+81-475-55-8855 (English, Chinese, Japanese)

admis@jiu.ac.jp (English, Chinese, Japanese)

## University 14



明海大学

### Meikai University

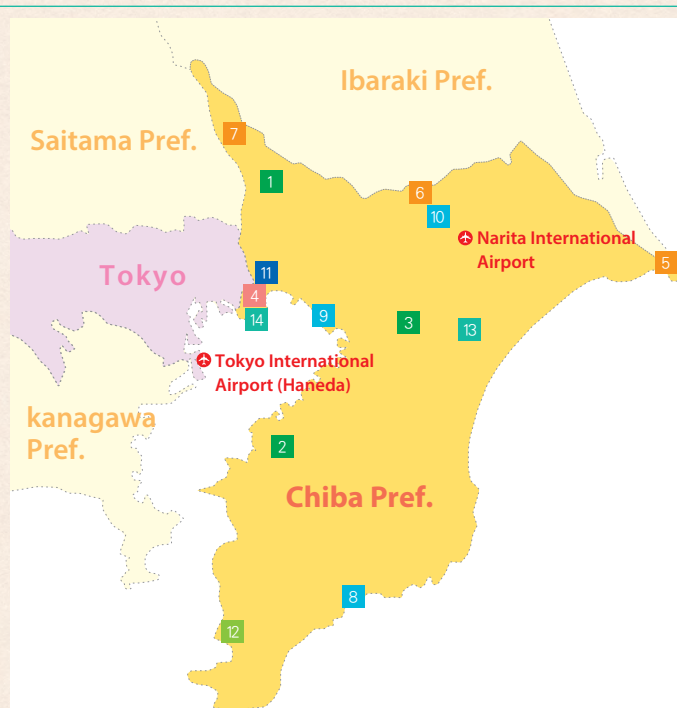
With a campus in Urayasu City, this university has various departments, including Departments of foreign languages, Department of Economics, Department of Real Estate Sciences, School of Hospitality & Tourism Management, and Faculty of Dentistry. Providing educational programs that aim for fostering of competent human resources in a global society, as well as striving to improve Japanese language education for foreign students, the campus has a multi-cultural environment with students from various countries.

<http://www.meikai.ac.jp/english/>

Reservation

+81-47-355-1101 (Japanese)

koho999@meikai.ac.jp (English, Chinese, Japanese)



- 1 Plant Factory Test Research Facilities (NPO Japan Plant Factory Association, JPFA)
- 2 Country Farm Ponpoko Village
- 3 Tomita Satoniwa Koen
- 4 Nakadai Seisakusho
- 5 Yamasa Soy Sauce Factory
- 6 NIHON SHOKKEN, Chiba Plant
- 7 Glicopia CHIBA
- 8 Jinzouji Temple
- 9 Mihama-en Japanese Garden
- 10 Cosplay No Yakata
- 11 Chiba Museum of Science and Industry
- 12 Minamiboso City Tourism Association
- 13 Josai International University
- 14 Meikai University



# Trip Itineraries for School Exchange Programs



day 01

Your Country



Narita



Boso-no-Mura



Naritasan Shinsho-ji Temple

Hotels in Narita

day 02

Hotels in Narita



School exchange program (Half a day)



Experiencing tea ceremony



Homestay

day 03

Homestay



Kamogawa Sea World



School exchange program (Half a day)

Hotels in Minamiboso

day 04

Hotels in Minamiboso



Mother Farm (Experience activities)



Sightseeing in Tokyo

Hotels in Urayasu

day 05

Hotels in Urayasu

Tokyo Disney Resort®

Hotels in Makuhari

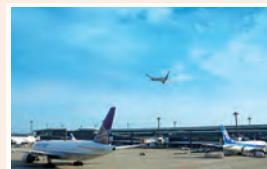


day 06

Hotels in Makuhari



SHISUI PREMIUM OUTLETS®



Narita

Your Country

Shopping!



# Trip Itineraries for School Exchange Programs



day 01

Your Country



Narita



Naritasan Omotesando Street



Naritasan Shinsho-ji Temple

Hotels in Narita

day 02

Hotels in Narita



School exchange program (one day)

Hotels in Kisarazu



day 03

Hotels in Kisarazu



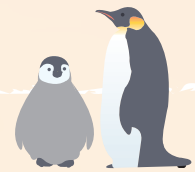
Mother Farm (Experience activities)



Kamogawa Sea World



Homestay



Thank you!

day 04



Homestay



Sightseeing in Tokyo

Hotels in Urayasu



day 05

Hotels in Urayasu

Tokyo Disney Resort®

Hotel



day 06

Hotel



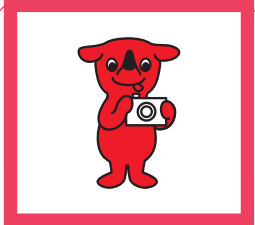
AEON MALL Makuari New City



Narita

Your Country

# Trip Itineraries for School Exchange Programs



**day 01**

Your Country



Narita



Naritasan Shinsho-ji Temple



Hotels in Narita

**day 02**

Hotels in Narita



School exchange program (Half a day)



Boshu uchiwa fan making



Homestay

**day 03**

Homestay



School exchange program in Tokyo (Half a day in the morning)



Sightseeing in Tokyo



Stay in Tokyo



**day 04**

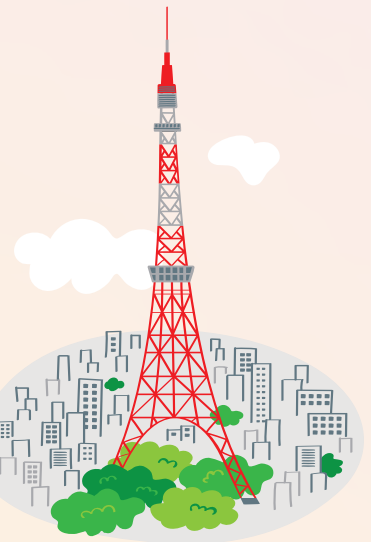
Stay in Tokyo



Sightseeing in Tokyo



Stay in Tokyo



**day 05**

Stay in Tokyo



Tokyo Disney Resort®



Hotels in Makuhari

**day 06**

Hotels in Makuhari



MITSUI OUTLET PARK MAKUHARI

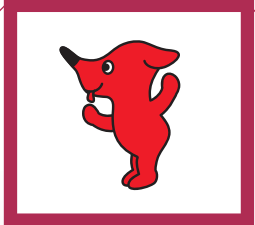


Narita



Your Country

# Trip Itineraries for School Exchange Programs



**day 01**

Your Country



Narita



Naritasan Shinsho-ji Temple



Hotels in Narita



**day 02**

Hotels in Narita



School exchange program (Half a day)



Cosplay Annex



Going to Nagano and Gunma areas



*Outside Chiba*

**day 03**

Hotel (Gunma, Nagano)



School Exchange Programs in Nagano and Gunma (Half a day in the morning)



Experiencing ski (Gunma, Nagano)



Hotel



*Outside Chiba*

**day 04**

Hotel



Experiencing ski (Gunma, Nagano)



Hotel



**day 05**

Hotel



Tokyo Disney Resort®



Hotels in Makuhari



**day 06**

Hotels in Makuhari



Mitsui Shopping Park LaLaport Tokyo-Bay



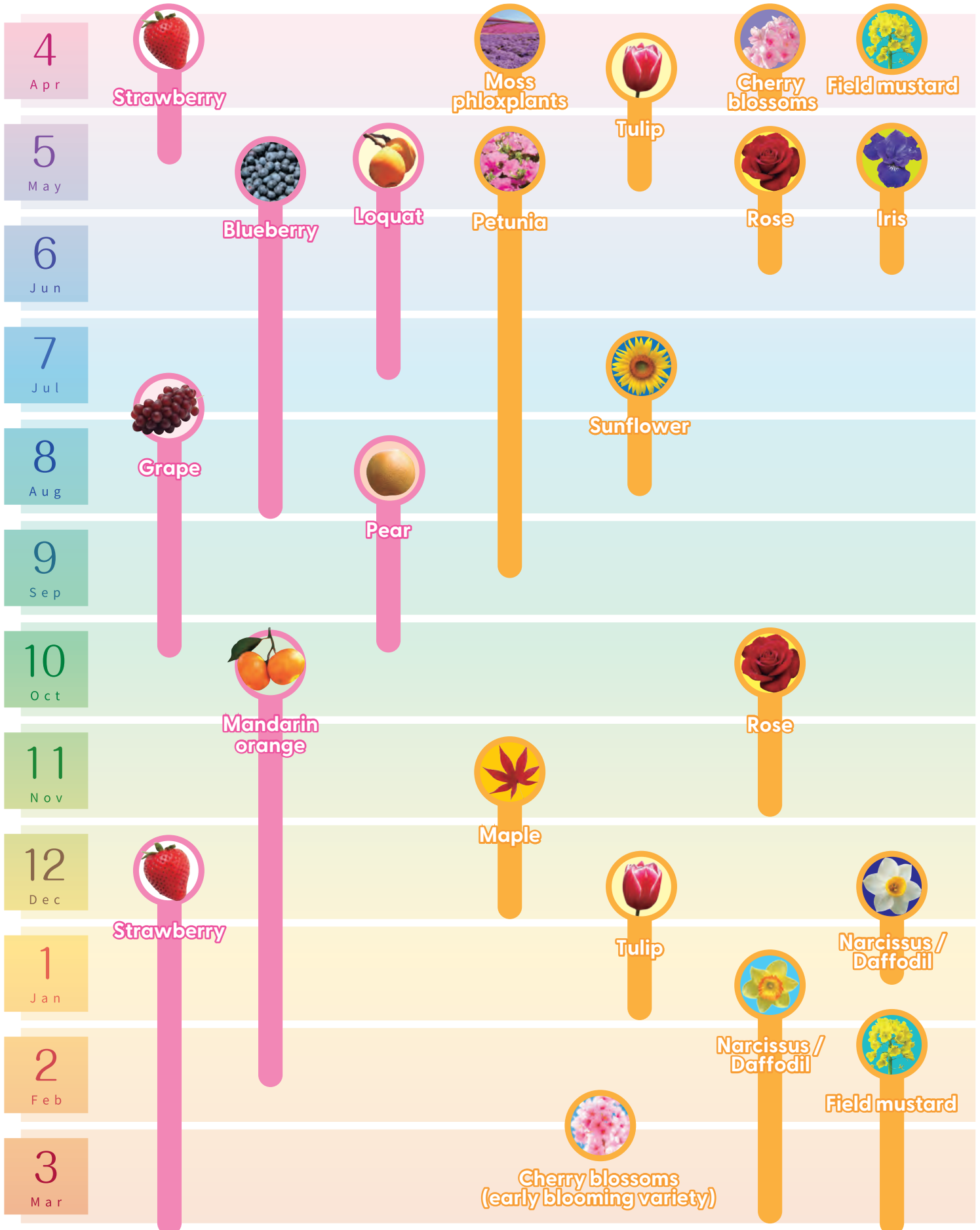
Narita



Your Country

# Chiba's Flowers and Fruits Calendar

Fruit picking also available



# The Food Culture in Chiba

Surrounded by nature, such as mountains and oceans, Chiba Prefecture has thriving agricultural and fishery industries.

The following section introduces attractive foods in Chiba Prefecture, including both representative Japanese dishes, such as sushi, and unique local specialty dishes.

Enjoy local delicacies from different areas in Chiba!



**Eels**

Narita is famous for eels and there are many eel restaurants around Naritasan Omotesando.



**Matsuri-zushi**

Matsuri-zushi is one of the local specialties, which has long been served at special occasions with people, such as weddings and funerals. Pink-tinted ingredients and rice with pink vinegar are used to create a pattern of flowers and other motifs. The superior skill of matsuri-zushi making has been carried down to the present day.



**Seafood Hamayaki**

You can grill a generous amount of fresh seafood, such as hard clams and Japanese spiny lobsters, and enjoy the great aroma and rich umami!

## Recommended Sweets



**Cookies of Hanagashi PETAL**

Not only Cute to the eye but also delicious to the mouth! Enjoy beautiful hand-made cookies with locally-grown colorful edible flowers.



**Peanut Soft-serve Ice Cream**

The soft-serve ice cream made with concentrated peanuts offers a rich aroma and refreshing flavor, creating the great taste people are craving.



**Peanut Monaka**

It is a wagashi traditional Japanese confection made with a generous amount of peanuts, which is one of the specialties of Chiba Prefecture. Inside is filled with sweet peanut paste along with chunky peanuts. The character illustrated on each wrapping is also really cute! There is also chewy "Peanut Manju" available, which is made with the same sweet peanut paste enveloped by bread.

## Traditional Crafts



**Tairyō-bata fisherman's flag of Choshi**



**Boshu uchiwa making experience**



**Kamogawa Maiwai-sen dyeing**

# Muslim-friendly Locations in Chiba

Chiba Prefecture offers Muslim-friendly services at the airport, some hotels, and some restaurants as well.

## Prayer Room



### Narita Airport

**Terminal 1:** 2F (After Passport Control) / 5F (Before Passport Control)  
**Terminal 2:** 1F (Before/After Passport Control)  
**Terminal 3:** 2F (Public Area) / 3F (After Passport Control)



### AEON MALL Makuhari Shintoshin

Grand Mall 4F Grand Terrace



### MITSUI OUTLET PARK KISARAZU



### Kamogawa Sea World



### SHISUI PREMIUM OUTLETS®



## Muslim-friendly Facilities

■ Restaurants ■ Hotels ■ Tourism facilities

Name	TEL	Access
AJIDOKORO TAKARAYA	+81-438-22-3765	<a href="https://takaraya.jp/menu/">https://takaraya.jp/menu/</a>
DASHIDOKORO HAN-NARI	+81-43-308-6535	<a href="https://www.premiumoutlets.co.jp/en/">https://www.premiumoutlets.co.jp/en/</a>
Homemade Udon Noodles KINEYA MUGIMARU	+81-476-32-7877	<a href="https://www.gourmet-kineya.co.jp/search/details.php?val=599">https://www.gourmet-kineya.co.jp/search/details.php?val=599</a>
La Toque	+81-476-34-6193	<a href="https://www.halalgourmet.jp/restaurant/473">https://www.halalgourmet.jp/restaurant/473</a>
Student cafeteria "Shokujin" (Kanda University of International Studies)	+81-476-34-6193	<a href="https://www.kandagaigo.ac.jp/kuis/main/shokujin/">https://www.kandagaigo.ac.jp/kuis/main/shokujin/</a>
HOTEL SPRINGS MAKUHARI SUIRAN	+81-43-296-0094	<a href="https://springs.co.jp/english/">https://springs.co.jp/english/</a>
SUSHI FUJINO	+81-50-5486-6445	<a href="https://sushi-ichizyu.com/">https://sushi-ichizyu.com/</a>
KIKUYA	+81-476-36-8036	<a href="http://www.kikuya.site">http://www.kikuya.site</a>
MARROAD INTERNATIONAL HOTEL NARITA	+81-476-32-9111	<a href="https://www.marroad.jp/narita/">https://www.marroad.jp/narita/</a>
HOTEL SPRINGS MAKUHARI	+81-43-296-3111	<a href="https://springs.co.jp/english/">https://springs.co.jp/english/</a>
NARITA AIRPORT REST HOUSE	+81-476-32-1212	<a href="https://www.apo-resthouse.com/english/">https://www.apo-resthouse.com/english/</a>
CHIBA PORT SQUARE	+81-43-307-6810	<a href="https://portsquare.jp/">https://portsquare.jp/</a> *There is a prayer room

\*Excerpted from CHIBA MUSLIM TOURISM GUIDE ([www.pref.chiba.lg.jp/kankou/muslim/documents/muslim\\_chiba.pdf](http://www.pref.chiba.lg.jp/kankou/muslim/documents/muslim_chiba.pdf))



# Chiba Prefectural Tourism & Local Products Association

Mail: [kyouryo-ib@chiba-tpa.or.jp](mailto:kyouryo-ib@chiba-tpa.or.jp)

TEL: +81-43-225-9170

FAX: +81-43-225-9198

Chiba Prefecture Educational Travel Official Website  
<https://www.visitchiba.jp/educational-travel/>

WEB

